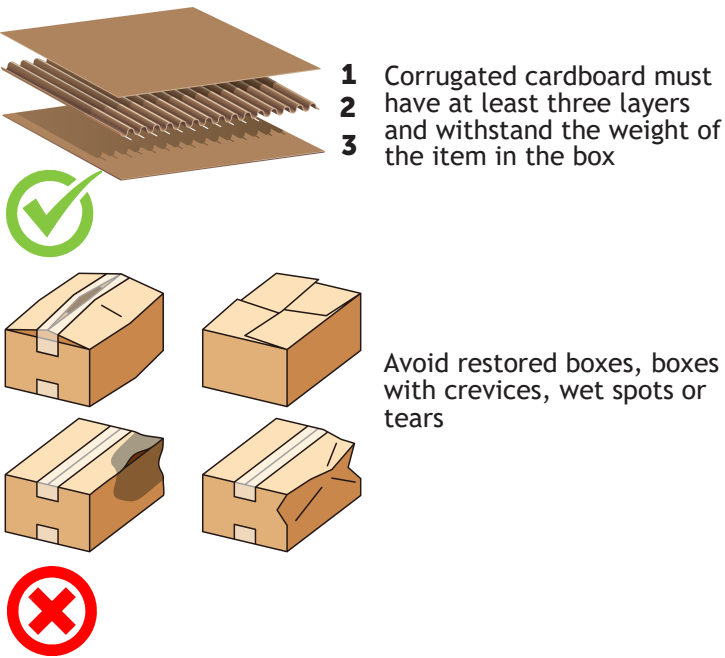


How to pack the shipments

Basic Rules

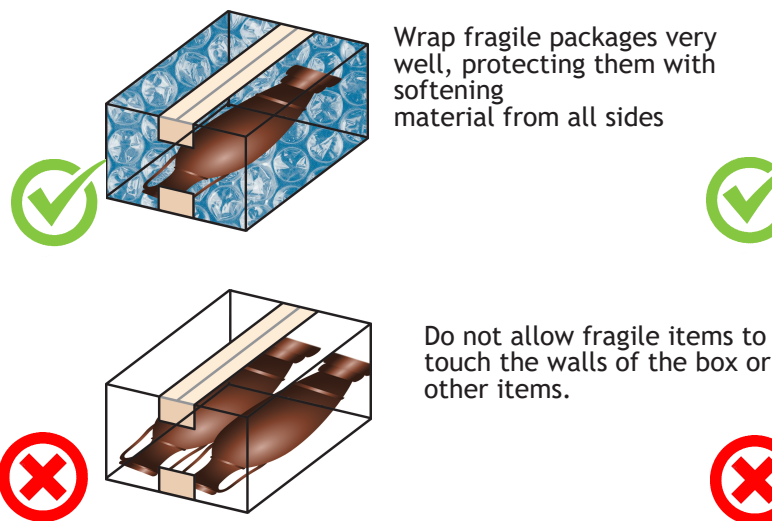
1 Choose quality cardboard



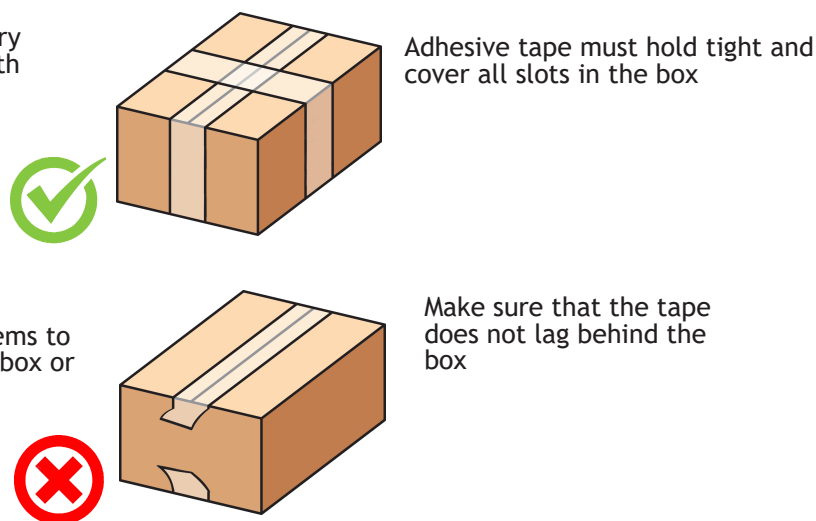
2 Securely hold, and do not leave voids and convex sides



3 Avoid contact of the fragile dispatch with the box and with each other



4 Tape the box tightly with tape



How to pack fragile items?

Fragile items:



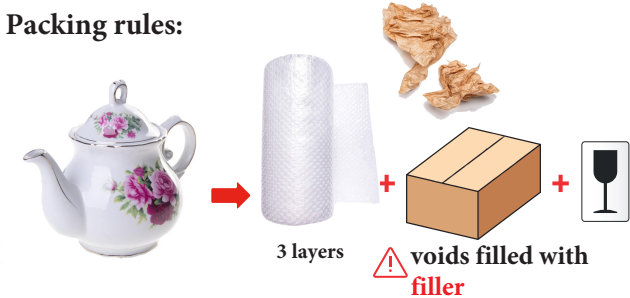
glass products or those which include glass elements (Liquids with glass, furniture with glass, protective glass for phones, car glass, headlights, alcoholic beverages, lamps, medical glass, medicines, perfumes, crystal products);

solid transparent plastic products or those which include transparent plastic (coasters, car lights, dishes, etc.);

gypsum, porcelain and clay products (Crockery, souvenirs from ceramics, clay products, plumbing, ceramic tiles and products from it);

mobile phones, tablets, e-books, GPS navigators, digital photo frames

Packing rules:



General rule for fragile items

On the two largest sides of the package of fragile items, mark "Caution, fragile". If you need to transport the items only in a certain position, stick the marking "Top". These markings shall not interfere with the marking.

How to pack TVs?

TVs and monitors without packaging with a diagonal up to 65 inches (without stand or legs)



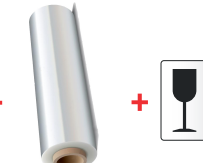
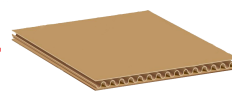
1. Wrap with three layers of air-pimpled film



2. Fill the item with foam on all sides



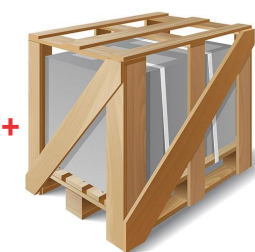
3. Wrap with a three-layer corrugated cardboard and wrap it with stretch tape



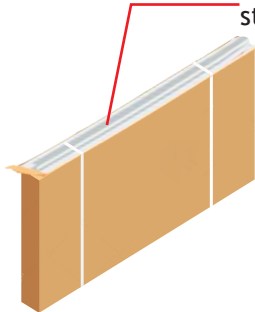
4. Stick the marking "Caution, fragile items"



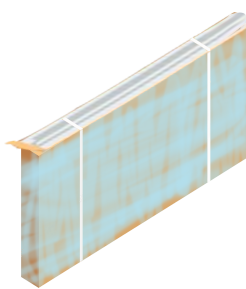
TVs and monitors with diagonal up to 65 inches



or



plywood books with straps

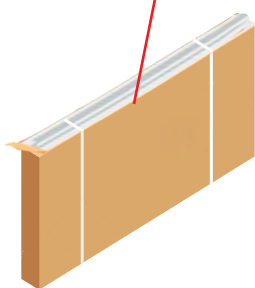


TVs and monitors in factory-made corrugated cardboard packaging with a diagonal up to 65 inches

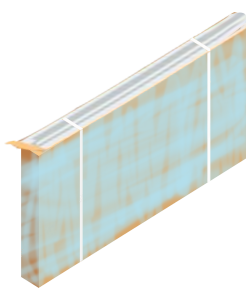


without additional packaging

or



plywood books with straps



How to pack auto glass?

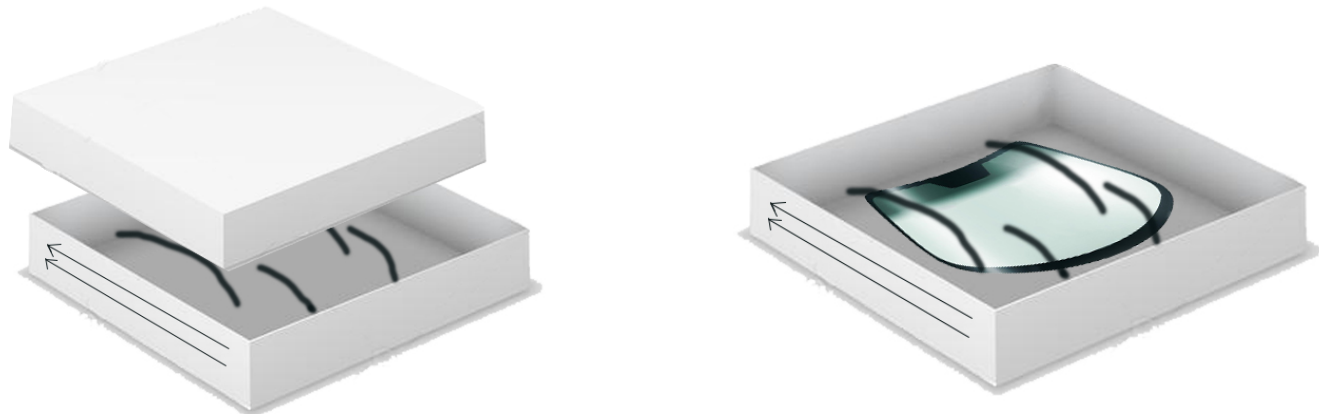
General rule:



Car windshield front / rear window with dimensions:
length, width - **up to 158 x 108 cm**,
bending height – **up to 15 cm**

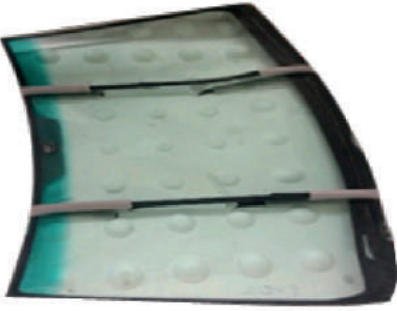
Car windshield front / rear with dimensions:
length, width - **up to 158 x 108 cm**,
bending height – **up to 15 cm**

Packing order:



1. Remove the box cover

2. Lay the glass in the box with the side parts up so that the bottom (wide) part of the glass coincided with the arrows on the box



3. Slide the inner straps into the foam tube and tighten them with carabiners for secure fit



4. Close the box and tighten the outer belts tightly, affix the markings

How to pack bulk parcels?

General rule:



Bulk materials and dry mixes in paper packaging (depending on size)

How to label packages?

How to post markings?

Company packaging "Premier Courier"

Parcels with a height of not more than 1 m

Long narrow packages

Flat parcels
(Smaller side up to 20 cm)

Bags

In place for marking (or in the center of the back of the envelope)

Top in the corner

Barcode along the package so as not to stick the contents of the marking

In the corner on the biggest side

Wrap the marking area with adhesive tape. Stick the markings on the tape



Place marking tape with tape. Glue the marking on the outer diameter



To mark products made of wood, metal, plastic or rubber (except for items like “Tires / wheels”), glue a special sticker with a reinforced adhesive base under the marking, and marking on it. It is forbidden to stick markings directly on the package (without a sticker)

Labeling requirements

